

SCOPE OF THE INTEGRATED MANAGEMENT SYSTEM (IMS)

1. **WEARCHECK**, a division of Synerlytic Services, provides a condition monitoring service by analysing relevant fluids and filters and as such, an entity that can be held legally responsible in terms of the requirements of ISO/IEC 17025:2017. In meeting customer and environmental expectations, we will maintain a documented Integrated Management System that meets the requirements of ISO 9001:2015, ISO 14001:2015 and ISO/IEC 17025:2017.

The Scope for the ISO 9001:2015 certification covers the design, development and provision of condition monitoring by analysing relevant fluids, filters and plant performance management through integrated technologies.

The Scope for the ISO 14001:2015 certification covers the provision of condition monitoring analytical services.

2. Scope includes the following:

Site	Physical Address	ISO 9001:2015	ISO 14001:2015	ISO/IEC 17025:2017
Durban	No 4 The Terrace, Westway Office Park, Westville	X	X	
Durban Transformer Lab	No 4 The Terrace, Westway Office Park, Westville	X	X	
Johannesburg	55 Angus Cres, Longmeadow Business Estate	X		
WSL	55 Angus Cres, Longmeadow Business Estate	X		X
Johannesburg Water lab	55 Angus Cres, Longmeadow Business Estate			X
Cape Town Water Lab	Unit 25 Reserve 3, Cnr Kruispad & Capricorn Way, Brackenfell			X
Middelburg	Unit 7A, Nungu Industrial Park, 13 Mandela Drive, Middelburg	X		

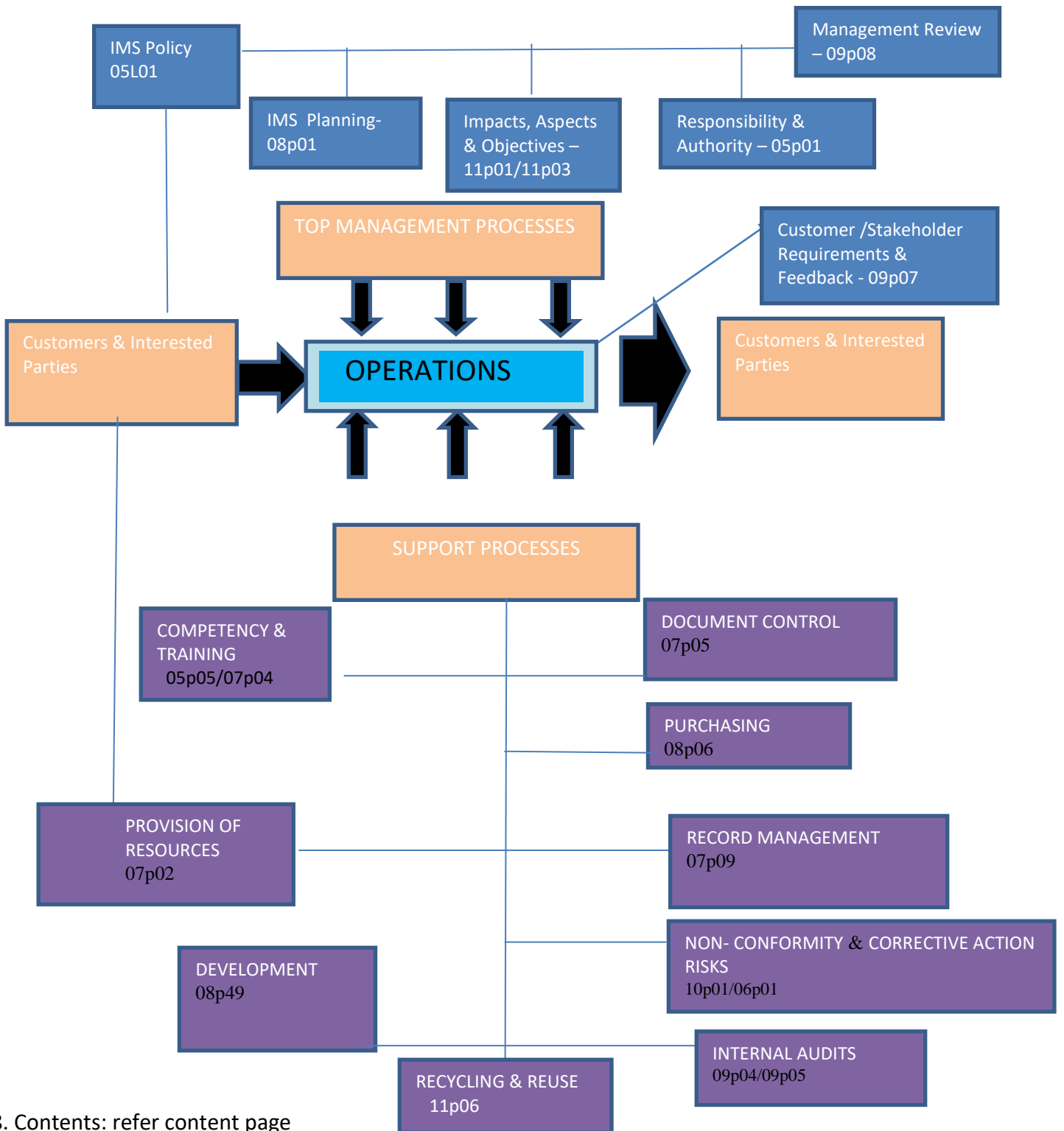
3. Exclusions: None

4. Stake holders: Refer Stakeholder register (w230)

5. Context: Refer SWOT analysis (w229)

6. Outsourced Processes: Refer 08p63

7. Sequence & Interaction



8. Contents: refer content page